

SLIDE PROJECTION / ACCESSORIES



reflecta[®]

 **BRAUN**[®]

SLIDE PROJECTORS	PAGE	3
LENSES		4
SLIDE MAGAZINES / SLIDE MOUNTS		5
SLIDE VIEWER / MAGNIFIER		6
LIGHT PADS		7
PROJECTION TABLES		8
EPISCOPE / OPAQUE PROJECTORS		9
OVERHEAD PROJECTORS		10



NOVAMAT

Automatic slide projector of the compact class for three magazine systems. A well-priced product for outstanding projections.



NOVAMAT	E130	E150
MAGAZINE		
Universal magazine	+	+
CS-magazine	+	+
LKM-magazine	+	+
SLIDE MOUNTS		
Inner size up to 24 x 36 mm, outer size 5 x 5 cm	+	+
SLIDE CHANGING		
Manual with changing arm	+	+
Automatic with remote control	+	-
Automatic with IR remote control	-	+
FOCUSING		
Manual for initial focus (with focus wheel)	+	+
Manual with remote control (w/ override)	-	-
Automatic with IR auto focus	+	+
Auto focus deactivation	-	-
REMOTE CONTROL		
Cable-attached remote control (integratable)	+	-
Infrared remote control (integratable)	-	+
Remote control (illuminated/illuminable)	-	-
FEATURES		
Microprocessor control	-	-
Halogen lamp 24 V / 150 W	+	+
Slide lifter for single slide projection	+	+
Anti-jamming system	+	+
Precision ball-bearing lens guide	+	+
Turbo cooling system w/ overheating protection	+	+
Height adjustment w/ one adjustable foot	+	+
„Made in Germany“	+	+
2-year guarantee	+	+
Weight approx. (kg)	3,6	3,6
Dimensions in cm (Length x Width x Height)	24,5 x 24,5 x 12,3	24,5 x 24,5 x 12,3
ARTICLE NO.	07006	07010

E130



TECHNICAL DATA AND FEATURES

■ For three magazine systems

Universal, CS, or LKM magazines can be used. The projector is adjusted to the magazine type by setting the lever on the slide changing arm to the appropriate position.

■ Slide lift

The slide lift makes the projector particularly suited for projecting individual slides. Gently press the slide lift down to open it to the top. Now, you can insert a slide from the side. This may also be helpful during a show.

■ Halogen lamp 24 V / 150 Watt

The lucent bright light of the halogen lamp illuminates your slides perfectly and projects the photo in brilliant colours.

■ Anti-jam system

The anti-jam system prevents slides from being jammed in the slide changing arm or being damaged. When the slide changing mechanism faces a defined resistance, the arm is disengaged to avoid damage.

■ Thermal safety switch

A powerful cooling fan ensures a projection which is gentle on your precious slides. A thermal safety switch switches the projector off when a critical temperature is reached.

■ Lens

Agomar 2.8 / 85 mm

■ Cable remote control

■ Focusing wheel

■ Ball-bearing precision lens guidance

■ IR-Autofocussystem

■ Weight: approx. 3.6 kg

■ Dimensions 245 mm x 245 mm x 123 mm

■ Made in Germany

Article No. 07006

E150

FEATURES

Like NOVAMAT E130, except

■ Automatic slide projector With infrared remote control

ACCESSORIES

■ Interchangeable lenses

(zoom, wide angle or high aperture lenses)

■ Slide mounts

(with/without glass) and magazines (universal or original CS maga-zines, rotary tray) according to DIN standard

■ Projection screens

■ Lamps

■ Projection tables

Article No. 07010

HALOGEN LAMPS

FEATURES

■ Halogen lamp for recording, projecting and dark room

■ 24 Volt

■ 150 or 250 Watt

Halogen lamp 150 W

Article No. 2063/80231

Halogen lamp 250 W

Article No. 2064/80232



MC 4.0/85-150 mm

TECHNICAL DATA AND FEATURES

- Zoom lens which adapts to any projection situation. Covers a larger range of focal lengths, 7 elements, coated.
- Focal length 85 mm to 150 mm
- Shaft 42.5 mm for Classic series projectors and 1800 AF
- Article No. 1054



SUPER PAXON

VARIO 3,5/70-120 mm

TECHNICAL DATA AND FEATURES

- Super Paxon Vario 3,5/70-120 mm
- When projecting your slides under varying room and screen conditions, a lens of variable focal length is extremely useful. The Super Paxon Vario 3.5/70-120 mm covers the range around the standard focal length of 85 mm in both directions.
- Braun Article No. 82251



ULTRALIT PL

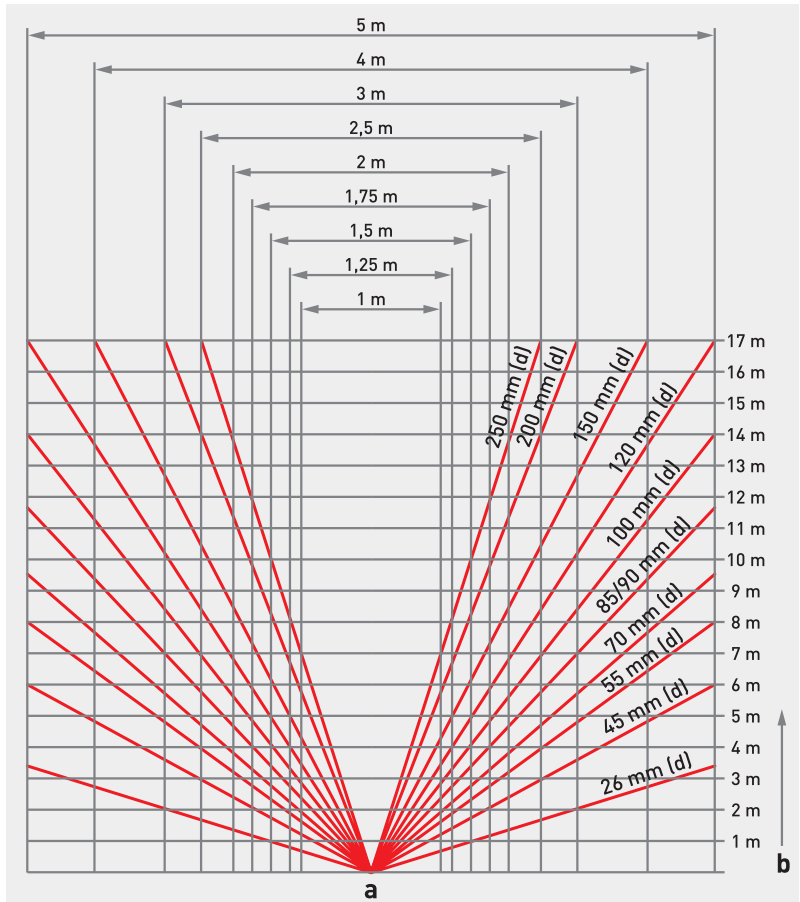
3,5/110-200 mm MC

TECHNICAL DATA AND FEATURES

- Ultralit PL 3,5/110-200 mm MC
- With this model, an excellent vario-lens in the upper class range is at your disposal also for large projection distances.
- Braun Article No. 82246

Lenses

With high-quality interchangeable lenses you can ideally adapt the projectors to the size of the slides, the projection screen and the room.



a = Luminous angle b = Projection distance c = Slide width d = Focal length of lens

Calculating the focal length of a lens:

$$\frac{\text{Slide width (mm)} \times \text{projection distance (mm)}}{\text{Projection screen width (mm)}} = \text{Focal length of lens (mm)}$$

Example:

$$\frac{36 \text{ mm} \times 4500 \text{ mm}}{1800 \text{ mm}} = 90 \text{ mm}$$

Calculating the projection distance:

$$\frac{\text{Focal length of lens (mm)} \times \text{Projection screen width (mm)}}{\text{Slide width (mm)}} = \text{Projection distance (mm)}$$

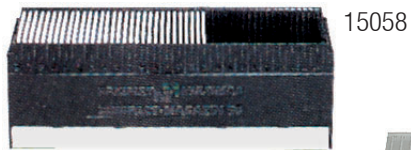
Calculating the projection screen width:

$$\frac{\text{Slide width (mm)} \times \text{projection distance (mm)}}{\text{Focal length of lens (mm)}} = \text{Projection screen width (mm)}$$



Slide Magazines

In the wide variety of PAXIMAT magazines you have different PAXIMAT as well as Universal and CS magazines at your disposal.



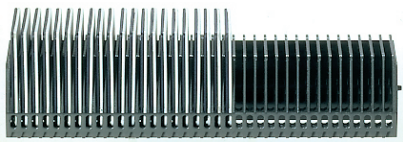
15058



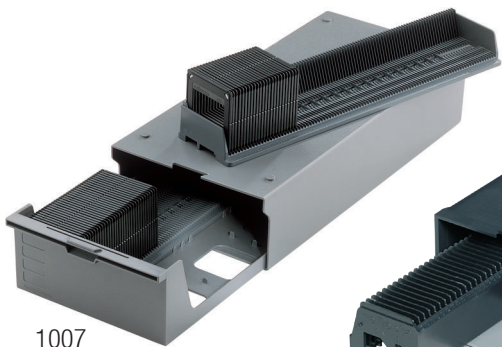
15059



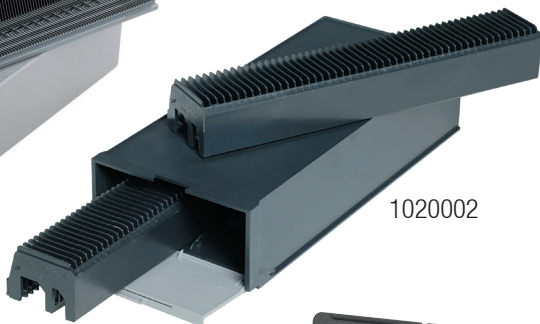
16063 / 16064



17101



1007



1020002

LASERPOINTER

FEATURES

- Wavelength: 650 nm
- power: max. 1 mW
- laser class: 2

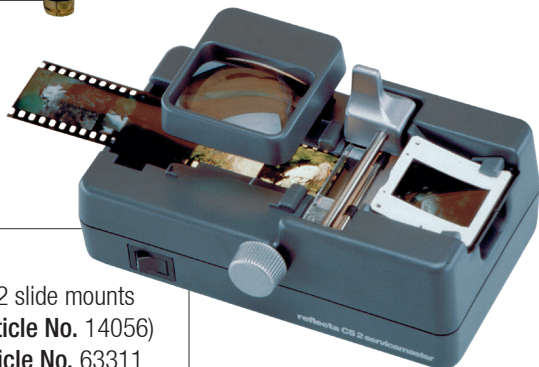
Braun Article No. 61000



SERVICEMASTER

SERVICEMASTER CS 2

Slide mounter for reflecta CS 2 slide mounts
(Article No. 1008 / Braun Article No. 14056)
Servicemaster CS 2Article No. 63311
Braun Article No. 14030



MAGAZINES



TECHNICAL DATA AND FEATURES

■ PAXIMAT MULTIMAG

compact magazine 50 for 50 slides (glassless) with up to 2 mm thickness. **Article No. 15058**

■ PAXIMAT magazine 36 (white)

for 36 slides with 2-3.2 mm thickness. **Article No. 15059**

■ PAXIMAT magazine 36 S (grey) (not shown)

for 36 slides (glassless) with up to 2 mm thickness.

Article No. 15060

■ PAXIMAT magazine 50 (white) (not shown)

for 50 slides with 2-3.2 mm thickness. **Article No. 15061**

■ PAXIMAT magazine 50 S (grey) (not shown)

for 50 slides (glassless) with up to 2 mm thickness.

Article No. 15062

■ PAXIMAT circular magazine 100 (white)

for 100 slides with 2-3.2 mm thickness. **Article No. 16063**

■ PAXIMAT circular magazine 100 S (grey)

for 100 slides (glassless) with up to 2 mm thickness.

Article No. 16064

■ Universal quality magazines

Stackable box 2x50 with two universal magazines for 50 slides each. **Article No. 17101**

MAGAZINES



FEATURES

Slide magazine 2 x 100

- The original reflecta CS system
- Slide archiving box for 200 reflecta CS slides
- Box holds two magazines with 100 slides each
- Spill-proof when transporting, handling, etc.
- Stacking system

Article No. 1007

Slide magazine Universal

- Quality according to DIN 108
- 2 slide archiving boxes for 100 slides each
- Each box holds 2 magazines with 50 slides each
- Stacking system

Article No. 1020002

CS SLIDE MOUNTS



FEATURES

- Glassless slide mount (DIN 108)
- Spill-proof, saves 50% space in original reflecta CS magazine (100 or 40 slides)
- Single-piece mount, folds on 36 mm long side
- Two-coloured, clicks to close
- 1.8 mm thick
- For 24 mm x 36 mm slides
- External dimension 5 cm x 5 cm

Part Numbers:

100 pcs. box**Article No. 1005**

200 pcs. box**Article No. 1042**

CS 2 slide mounts, like reflecta slide mounts, except

- **Single-piece mount, folds on 24 mm short side** for SERVICEMASTER CS2

100 pcs. box**Article No. 1008**

Braun Article No. 14056

SLIDE VIEWER B220

TECHNICAL DATA AND FEATURES

- Mains-operated slide viewer
- Slot for fast slide change
- 2.5-times magnification
- Supply slot and collecting tray

Article No. 1038



Slide Viewer



MAGNIFIERS

DISPLAY 12 PGS.

- 4x Ultralit® Mag. Ø 50 mm / 5x Article No. 48001
- 4x Ultralit® Mag. Ø 65 mm / 5x Article No. 48002
- 4x Ultralit® Mag. Ø 75 mm / 3x Article No. 48003

Article No. 48000

ULTRALIT® LED MAGNIFIER POCKET - 3X

- Illumination 1 LED
- Lens 45 x 38 mm
- Magnification 3x
- Dimensions (approx.): 98 x 58 mm
- Weight: 58 g

Article No. 48004

ULTRALIT® LED MAGNIFIER 88 - 2.2X/4.4X

- Illumination 2 LEDs
- Lens Ø 88 mm
- Magnification 2.2x (Main lens) / 4.4x (Inserted lens)
- Dimensions (approx.): 88 x 220 x 15 mm
- Weight: 75 g

Article No. 48005

ULTRALIT® LED MAGNIFIER 108 - 2X / 4X

- Illumination 2 LEDs
- Lens Ø 108 mm
- Magnification: 2x (Main lens) / 4x (insert lens)
- Dimensions (approx.): 108 x 245 x 20 mm
- Weight: 205 g

Article No. 48006

ULTRALIT® LED MAGNIFIER 130 - 2X / 4X

- Illumination 2 LEDs
- Lens Ø 130 mm
- Magnification: 2x (Main lens) / 4x (insert lens)
- Dimensions (approx.): 130 x 265 x 20 mm
- Weight: 255 g

Article No. 48007

ULTRALIT® MAGNIFIER 80 - 2.2X

- Lens Ø 80 mm
- Magnification: 2.2x
- Dimensions (approx.): 185 x 80 mm
- Weight: 46 g

Article No. 48008



Light Pads



Regelbare Beleuchtung
Adjustable illumination



Regelbare Beleuchtung
Adjustable illumination

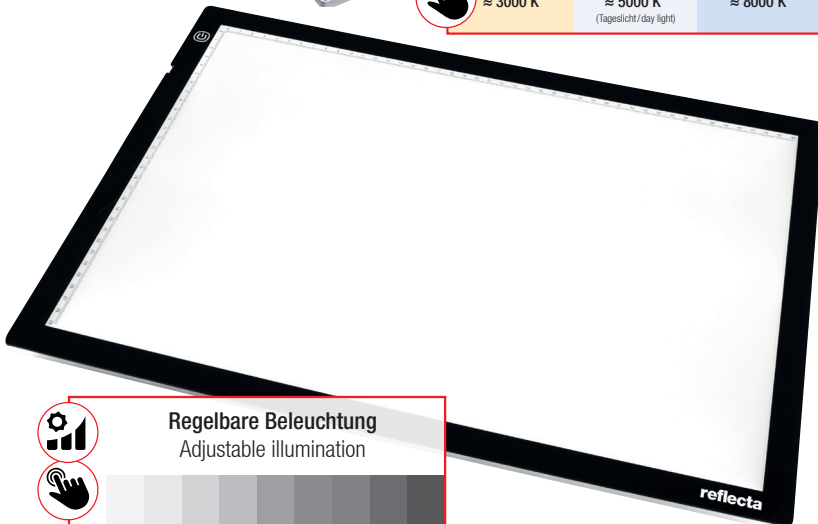


Regelbare Farbtemperatur
Adjustable color temperature

≈ 3000 K ≈ 5000 K ≈ 8000 K
(Tageslicht / day light)



Regelbare Beleuchtung
Adjustable illumination



A5 SUPER SLIM

reflecta

TECHNICAL DATA AND FEATURES

- Viewing area: 19 x 14 cm
 - Adjustable illumination (dimnable)
 - Light source: LEDs
 - LED Lifetime: approx. 50.000 hours
 - Power supply: Adaptor DC 3,5 mm 12V 4.3W
 - Weight: approx. 400g
 - Dimensions: 23.9 x 18.9 x 0.8 cm
- Article No. 10318

A4 SUPER SLIM

TECHNICAL DATA AND FEATURES

- Viewing area: 31 x 21 cm
 - Adjustable illumination (dimnable)
 - Light source: LEDs
 - LED lifetime: approx. 50.000 hours
 - Power supply: Adaptor DC 3,5 mm 12V 8W
 - Weight: approx. 900g
 - Dimensions: 36 x 27 x 0.8 cm
- Article No. 10317

A4+ SUPER SLIM

TECHNICAL DATA AND FEATURES

- Viewing area: 31 x 21 cm
 - Adjustbale illumination (dimnable)
 - Light source: LEDs
 - LED lifetime: approx. 50.000 hours
 - CRI: ≥ 90
 - Color temperature approx. 3000K / 5000K / 8000K
 - Power supply: 5V 2A micro USB
 - Weight: 640g
 - Dimensions: 37.1 x 27.8 x 0.8 cm
- Article No. 10320

A3 SUPER SLIM

TECHNICAL DATA AND FEATURES

- Viewing area: 44 x 29 cm
 - Adjustbale illumination (dimnable)
 - Light source: LEDs
 - LED lifetime: approx. 50.000 hours
 - Power supply: Adaptor DC 3,5 mm 12V 11W
 - Weight: approx. 1600g
 - Dimensions: 48.9 x 33.9 x 0.8 cm
- Article No. 10319

L1800

TECHNICAL DATA AND FEATURES

- Viewing area: 61 x 30 cm
 - Can be mounted to a wall
 - Mains-operated: power adapter 24 V 2000 mA
 - Colour temperature: 5000 °K +/- 270 °K
 - Dimensions: 70.3 x 40.5 x 3.0 cm
- Article No. 10307
Replacement tube Article No. 1030701

TECHNICAL DATA AND FEATURES

Basic AV Trolley has been specifically designed as a basic presenter equipment. Its height can be adjusted from 63 cm to 98 cm and it has four wheels with two locking castors.

- Height can be adjusted from 63 cm to 98 cm
 - Tray size 38 cm x 37 cm
 - Movable rollers, two locking rollers
 - Maximum load 25 kg
- Article No. 6055

SENIOR / L

TECHNICAL DATA AND FEATURES

Stable, folding table with two levels

- Stable and versatile projection table
 - 2 trays, top tray can be inclined via crank handle
 - Adjustable foot to level off uneven floor
 - Top tray 49 cm x 35 cm / bottom tray 41 cm x 28 cm
 - Height Top tray 102 cm / bottom tray 65 cm
 - Max. burden Top tray 10 kg / bottom tray 5 kg
- Article No. 6051
BRAUN Article No. 14046 (Projection table L)

XL

TECHNICAL DATA AND FEATURES

Stable, folding table with two particularly large levels

- Stable and versatile projection table
 - 2 trays, top tray can be inclined via crank handle
 - Adjustable foot to level off uneven floor
 - Top tray 60 x 40 cm / bottom tray 45 x 29 cm
 - Height Top tray 112 cm / bottom tray 75 cm
 - Max. burden Top tray 30 kg / bottom tray 9 kg
- BRAUN Article No. 14047

PROFI LINE

TECHNICAL DATA AND FEATURES

This AV projection rack is a projection stand to be placed on a table. The AV Projection Table-Rack is of extreme rigidity to enable an absolutely stable overlap dissolve projection.

- 2 Trays
 - 4 Adjustable Feet
 - Top tray: 44 x 37 cm
bottom tray: 46 x 37 cm
 - Height Top tray 42 cm / bottom tray 13-27 cm
 - Max. burden Top tray / bottom tray: 18 kg
 - Net weight total: 9,5 kg
- BRAUN Article No. 14045

Projection Tables



6055



6051/ 14046 / 14047



14045

Episcope- Opaque projectors



XL

TECHNICAL DATA AND FEATURES

- Multicoated projections lens:
SUPER PAXIGON 1:3.5/280 mm MC
- Halogen lamp 300W/220-230 V (Socket GX 6,35)
- Interval light lamp 15W/220-230 V (socket E 14)
- Micro Switch for Halogen lamp
- Mains Switch
- Overheating Protection
- Turbo-Cooling System
- Heat Protection filter
- Adjustable Feet
- Fixing Spring
- Removable Cover to project cropping
- Fuse: F2A for 230V~

Article No. 27301
BRAUN Article No. 10052

ACCESSORIES

Interval lamp 220-230 V / 15 W
Article No. 2068 / BRAUN Article No. 80006
Halogen lamp 240 V / 300 W
Article No. 2070 / BRAUN Article No. 80005

A4 / XXL

TECHNICAL DATA AND FEATURES

- Multicoated projection lens:
SUPER PAXIGON 1:2,8 / 350 mm MC
- Halogen reflector lamps 4 x 360 W (ENX 82V)
- Interval light lamp 15 W / 230 V (socket E 14)
- Enlargement 3.5x to 9.5x at projection distance
1.55 – 3.5 m for a size of projected image
1.0 – 2.7 m (Width)
- Overheat protection
- Turbo cooling system
- Removable cover and blackout cloth for projecting
- Adjustable foot
- Override switch with warning light
- Mains switch and control panel
- Tilt and sharpness correction

Article No. 27300
BRAUN Article No. 10053

ACCESSORIES

Halogen reflector lamp 360 W
Article No. 2071 / BRAUN Article No. 80240

EPISCOPE	XL	A4 / XXL
Projection plate (mm)	150x150	285x285
Mains voltage	230 V / 50 Hz	230 V / 50-60 Hz
Power Consumption	300 W	1500 W
Dimensions (cm) LxWxH	35 x 21 x 23	59 x 48 x 33
Weight Net (kg)	3,5	19
ARTICLE NO.	27301	27300
BRAUN ARTICLE NO.	10052	10053

TECHNICAL DATA AND FEATURES

- **reflecta Cubus 251 / 253 / 401**
- **BRAUN Paxilux 2501 / 2503 / 4001**

The ecoline model – sound, solid and excellent, value for money! We offer the solution for users who wish to stow their standard overhead projector in confined space. Here are all advantages of a standard overhead projector combined with the practical fold-down arm.

REFLECTA CUBUS	251	253	401	403
BRAUN PAXILUX	2501	2503	4001	
Working surface (mm)	285x285	285x285	285x285	285x285
Projection lens (mm)	1 lens f=285	3 lens f=320	1 lens f=285	3 lens f=320
Projection lamp	2x250W/24V	2x250W/24V	2x400W/36V	2x400W/36V
Projection angle	360° rotation and tilting angle up to 60° (all Models)			
Light output approx. Lumen	2.000	2.000	2.000	4.000
Quick lamp changer	+	+	+	+
Foldable arm	+	+	+	+
Overheating protection	+	+	+	+
Eco. Mode	+	+	+	+
Voltage	220/240V			
Frequency	50-60 Hz			
Dimensions (folded) (cm)	38x42x27			
Packing dimensions (cm)	54x45x35			
Net weight / Gross (kg)	10,9 / 12,2	11,3 / 12,6	11,7 / 13,4	2,2 / 13,9
BRAUN ARTICLE NO.	11055	11056	11060	
ARTICLE NO.	27103	27104	27105	27106

Overhead Projectors

Our line of stationary Overhead Projectors is the solution to meet your need and budget. It gives a sharp image with high lumens. The safety features, the cooling system and the overheat protection put the life expectancy of the projectors to the maximum. If one lamp fails, the lamp changer feature makes sure your image is still being projected with the other lamp.



reflecta

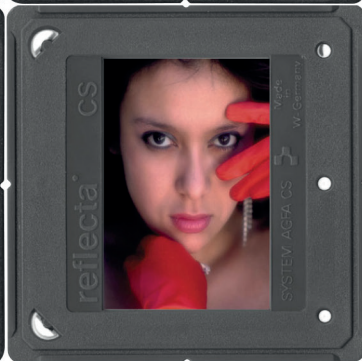
PORTA

TECHNICAL DATA AND FEATURES

- **Porta 253**

The reasonably well priced all-rounder with folding mechanism, small and handy portable overhead projector, supplied with hard case, assembled/ dismantled in seconds, suited for daily use. Portable Overhead Projectors are designed to meet the needs of modern, mobile presenters. Features like easy set up and handling, silent cooling system and overheat protection make the projector to a reliable companion with a maximum of life expectancy.

PORTA 253	253
Projection lamp	250W – 24V
Lamp changer	+
Power supply	Electric transformer
Lamp saver/Economic switch	-
Projection lens (elements)	3-vario
Focal length (f=mm)	280-320
Picture width min-max.	90-425 cm
Projection Distance min-max.	120-450 cm
Condenser	+
Working surface	285 x 285 mm
Foldable post	+
Overheating protection	+
Light output (Lumen)	2.500
Dimensions (cm) LxWxH	48 x 31,5 x 52
Dimensions folded (cm)	8,5 x 32 x 13
Weight Net / Gross (kg)	7 / 8
ARTICLE NO.	27202



reflecta® gmbh

Merkurstrasse 8
72184 Eutingen, Germany

Fon +49 (0) 74 57 / 94 65 60
Fax +49 (0) 74 57 / 94 65 72

info@reflecta.de
www.reflecta.de



Artikel-Nr. / Item No. 72204



BRAUN® Photo Technik GmbH

Merkurstrasse 8
72184 Eutingen, Germany

Fon +49 (0) 74 57 / 94 65 60
Fax +49 (0) 74 57 / 94 65 72

info@braun-phototechnik.de
www.braun-phototechnik.de



Artikel-Nr. / Item No. 0094500268

Irrtümer und Änderungen im Sinne des technischen Fortschritts vorbehalten. Subject to change due technical progress.