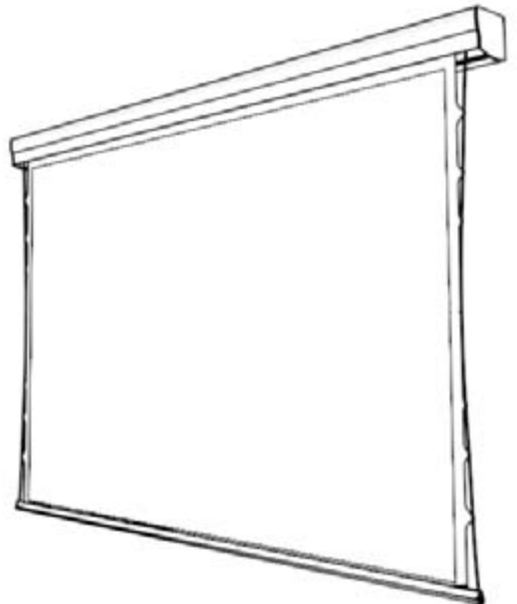
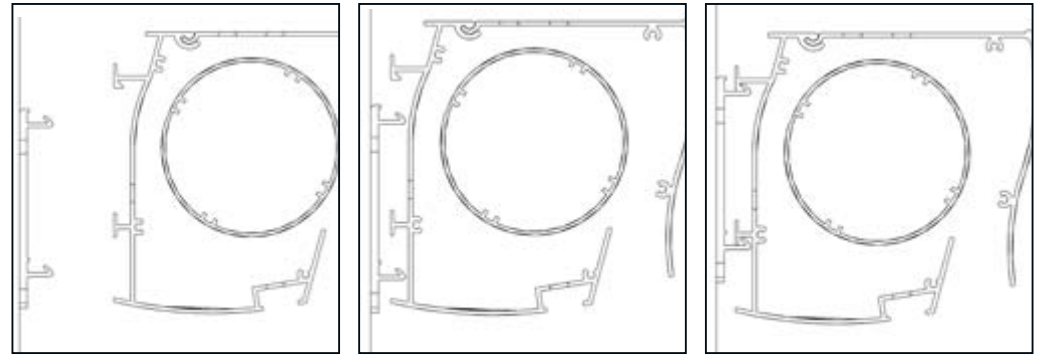
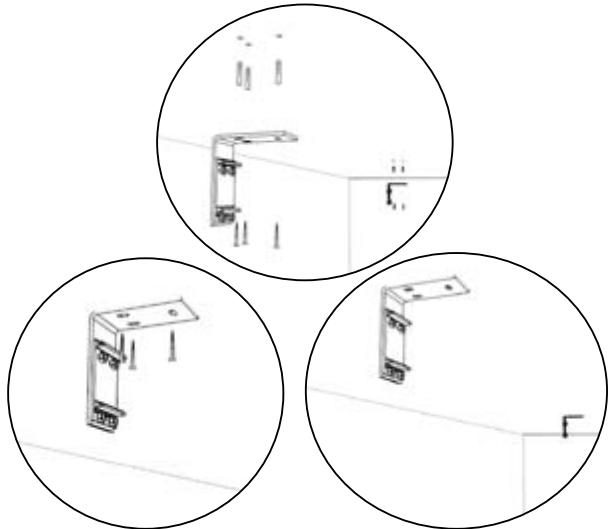
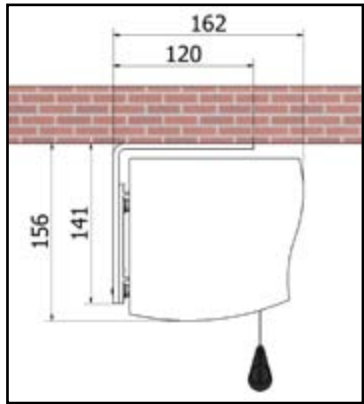
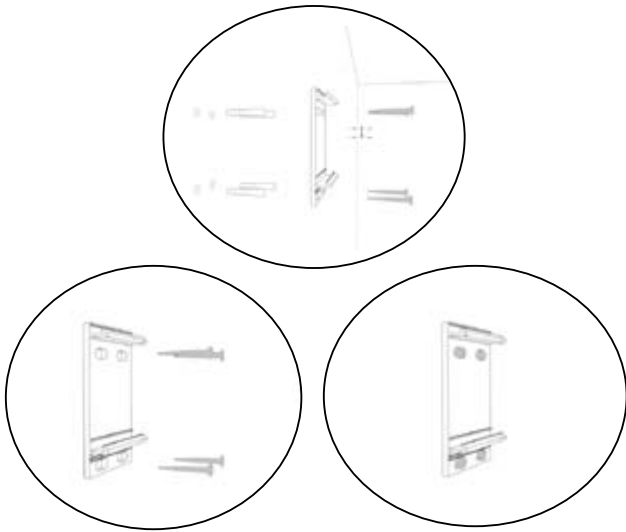
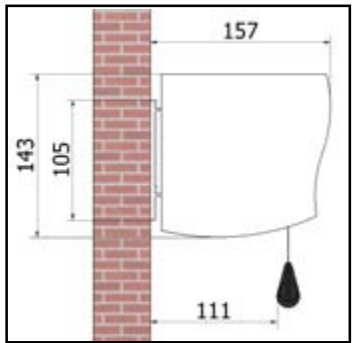
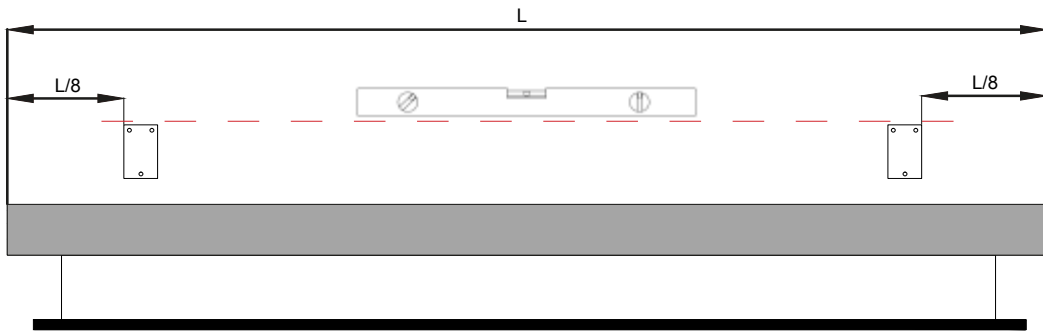
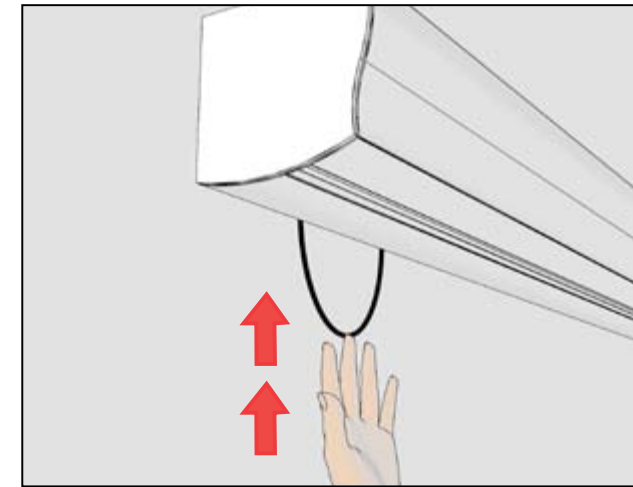
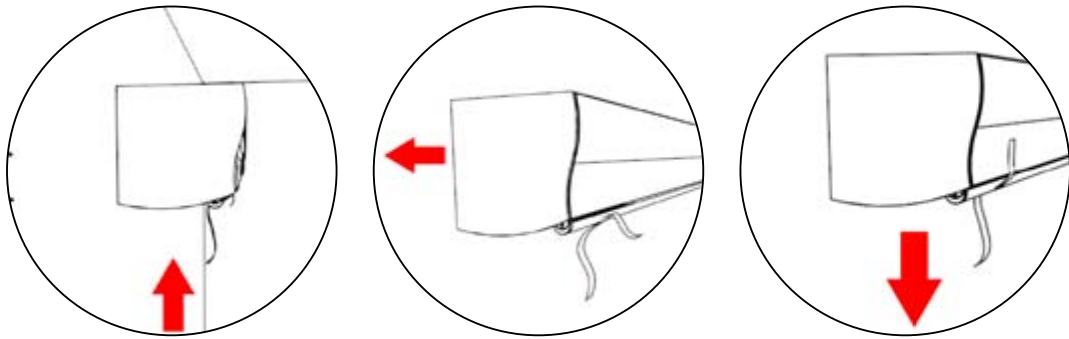
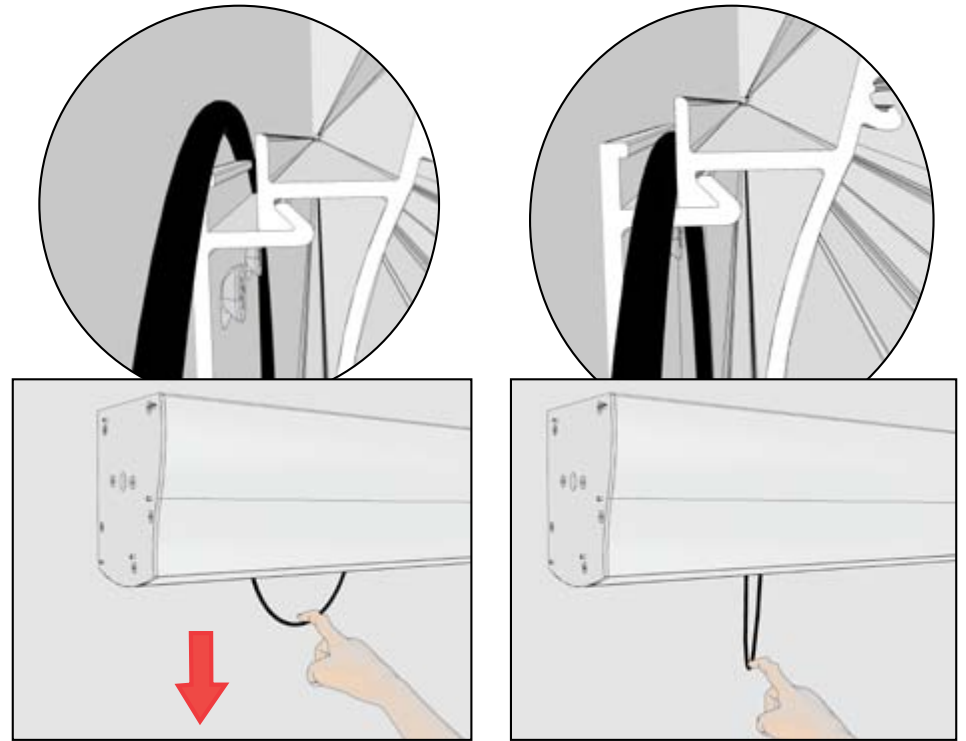
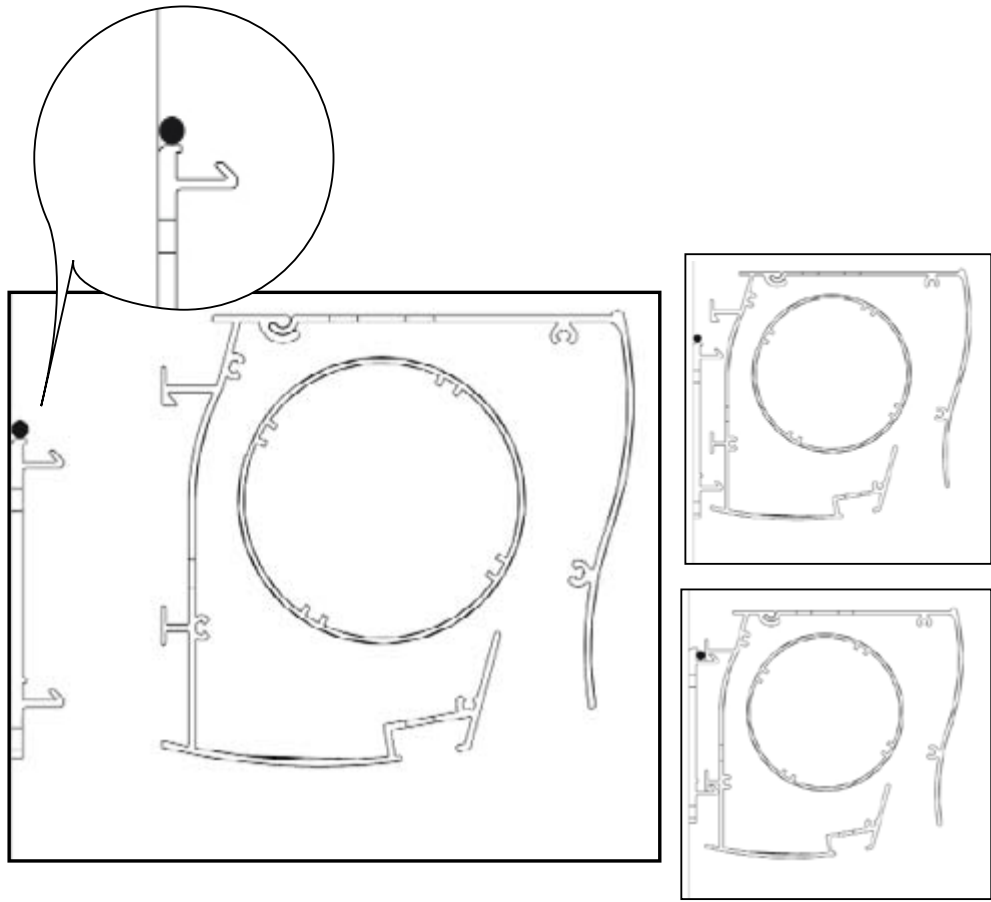


WAVE

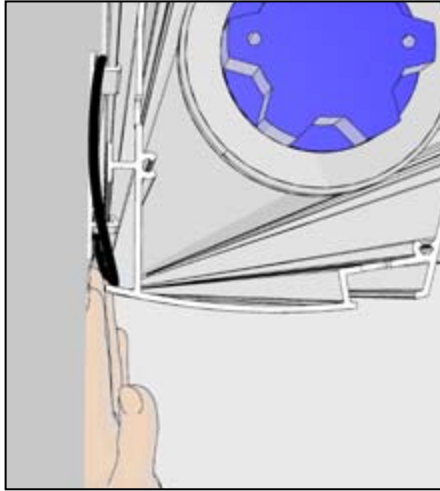
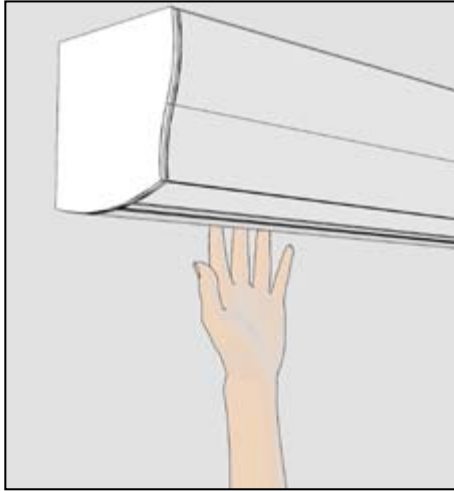
WAVE
TENSIONED







SPINGERE IN ALTO PUSH SAFETY RUBBER UP

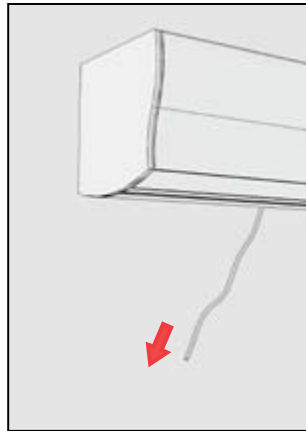
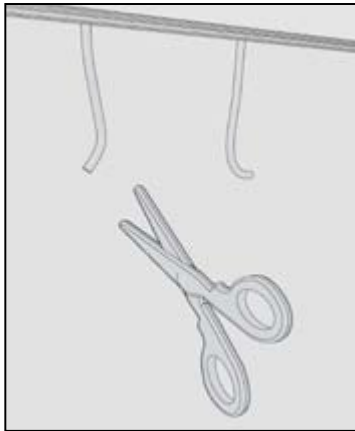
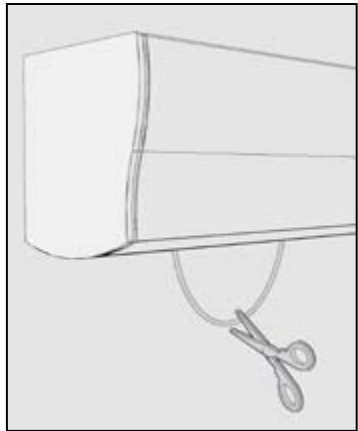


NASCONDERE LA GOMMA DI SICUREZZA NELL'APPOSITA CAVA
HIDE SAFETY RUBBER IN THE GROOVE BEHIND THE BOX



La tela in PVC è molto sensibile al calore. In un ambiente molto caldo la tela può ammorbidirsi eccessivamente ed allungarsi verso il basso alterando il rapporto video. Si deve evitare assolutamente di posizionare lo schermo davanti a finestre illuminate dal sole oppure sopra termosifoni, caminetti e stufe di ogni genere.

Maggiore sarà il calore assorbito dallo schermo, maggiore sarà la deformazione del telo che assumerà una forma allungata con i bordi laterali incurvati.



RIMOZIONE GOMMA DI SICUREZZA
REMOVING THE SAFETY RUBBER

The PVC fabric is very sensitive to heating. In a very hot environment the fabric can soften excessively and stretch down by altering the video ratio. You should absolutely avoid placing the screen in front of sunlit windows or above radiators, fireplaces and stoves of all kinds.

The higher will be the heating absorbed by the screen, the higher will be the deformation of the surface which will assume an elongated shape with curved lateral edges.

